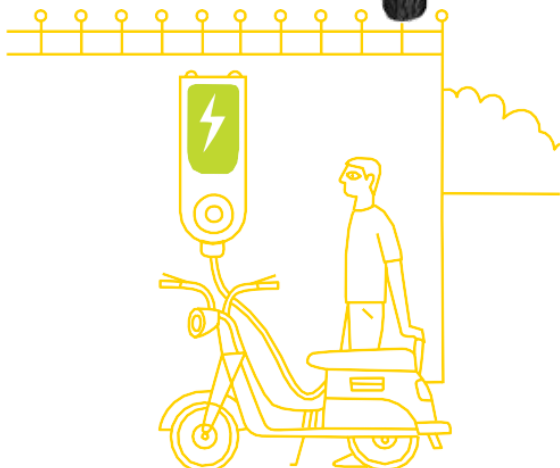
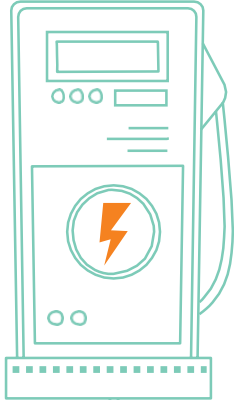


Ecovespa-Electric Two Wheeler



Our Vision and Philosophy

We have recognized that we need to think differently and more efficiently. Our vision is to develop and manufacture truly sustainable products that the big majority of the world's population can afford. This philosophy is based on reinventing every part of the product through multifunctional design, simplification, and a clear lightweight approach. We are working together with a very innovative firm Electro Eco which is committed to providing world-class vehicles for the mass community.

Our Product

The Electric Scooter is an electric two-wheeler high-end passenger vehicle that comes in two versions; with a cargo box and other for passengers with a Lithium battery. Nordische benefits from its low cost, quick charging, and high efficiency to meet the transportation and logistics needs of the 21st century. We are adding our Aluminium batteries in the coming months.

Nordische Technologies is bringing world-class vehicle Engineering technology for the development of both urban and rural mobility solutions. The vehicle incorporates all the latest technology available in this category. This is a completely sensor-driven next-generation vehicle understanding transportation regulation around the world.

Key Benefits

- **Eco-friendly and Quiet:** Electric charging vehicles have zero-emission levels, as they don't utilize non-renewable resources and burn fuel. The electric motors generate electricity that doesn't emit any greenhouse gases or any other pollutants. These vehicles are quieter than the vehicles powered by conventional fuels, which don't cause noise pollution as well.
- **Energy Availability:** All the vehicles are launched with Lithium batteries which can be charged from home or any electrical charging station.
- **Low Fuel Costs:** Unlike conventionally fueled vehicles, solar vehicles have no fuel costs and a low cost of maintenance.
- **Driving Comfort:** Having aluminum and lightweight components, has a high-powered motor that can run fast with minimum power consumption.





NORDISCHE
MOBILITY REDEFINED



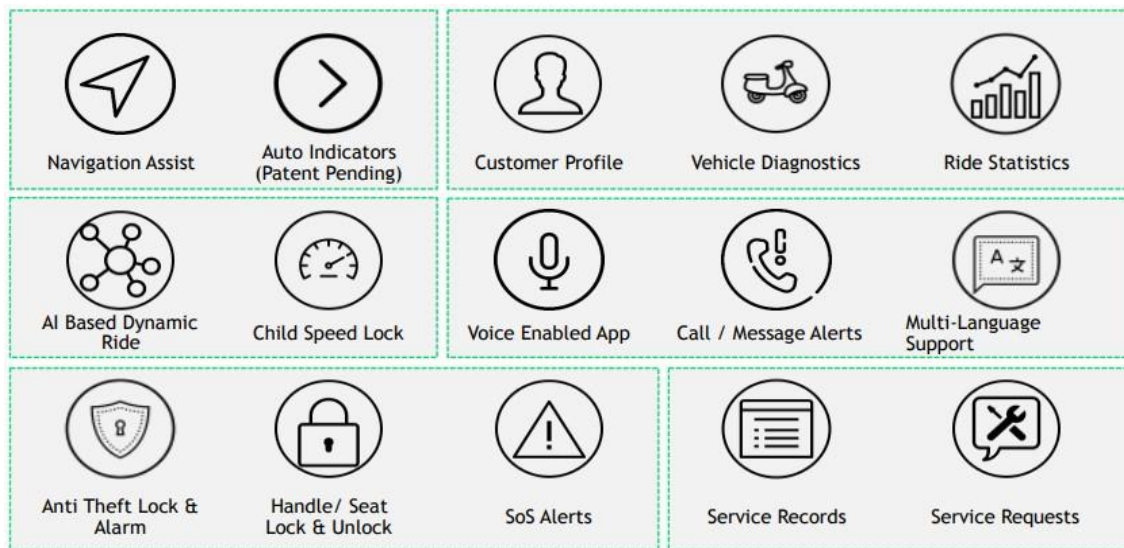


Technical Specification Eco Vespa		
Vehicle Dynamics	Payload	120Kg
	Gross Vehicle Weight(GVW)	145Kg
	Tires	10 Inch
	Vehicle Length	1800mm
	Vehicle Width	440mm
	Vehicle Height	1130mm
	Wheel Base	597 mm
	Ground Clearance	220mm
Performance	Vehicle Speed	25 km/hr (as per government norms) But can go up to 45 km/hr but reduces expected range
	Time to reach maximum speed	10sec
	Gradient	17°
	Expected Range	90 to 100 km.
	Front Brake	Disc Brake
	Rear Brake	Disc Brake
Electronics	Voltage System	48V/60v
	Motor Continuous Power	250W
	Motor Peak Power	1000 W
	Motor Continuous Torque	11Nm
	Motor Peak Torque	60Nm
	Battery Type	Lithium ion (Currently) Graphene Battery (in Future)
	Battery Pack	48V /35Ah*
Other Details	Display	Digital
	Controller	48v/60v
	DC to DC Converter	12V
	Alloy Wheel	10 inch

The following sensors are available for various measurement in the vehicles.

- **LiDAR**
- **Pressure**
- **Temperature**
- **Humidity**
- **Voltage**
- **Current Speed**
- **Also other host of sensors for Battery and solar panel management.**

ILLUSTRATIVE FEATURES OF THE VEHICLE

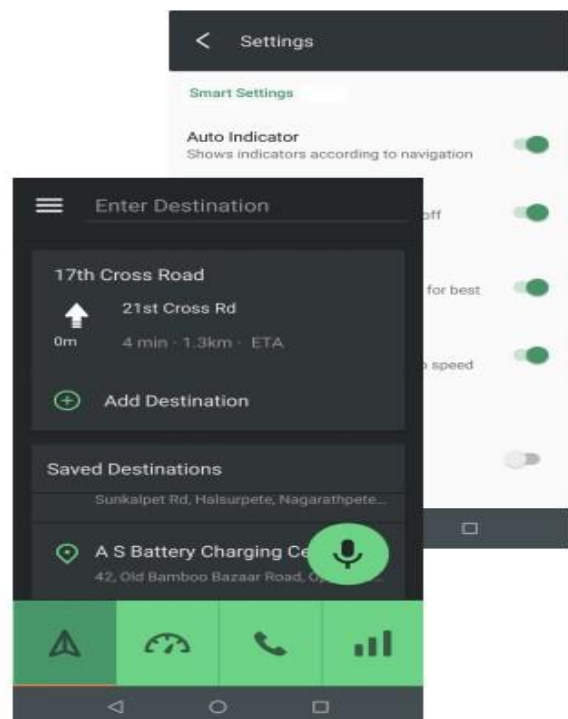


Navigation Assist

- Turn by Turn Navigation on Speedometer*
- Integrated maps (Google / MMI / Open Source Maps)
- Voice from phone
- Option for saving frequent locations
- Nearest fuel/charging station

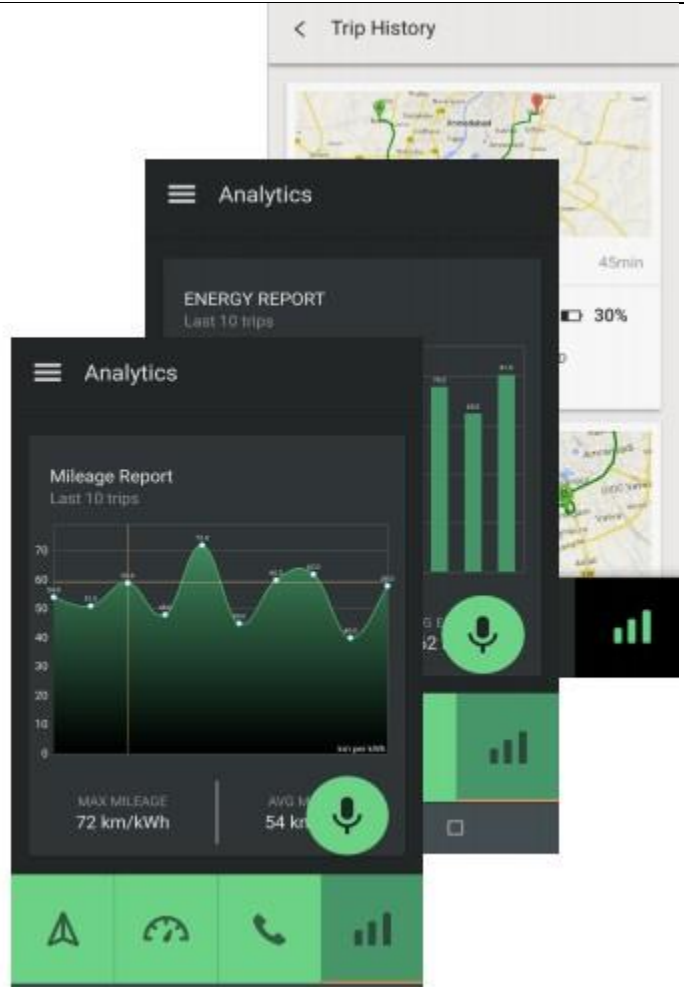
Auto Indicators

- Automatic Indicators before upcoming turn
- Switch off indicators after turn



Ride Statistics

- Mileage Report*
- Energy Report (Needs Compatible Controller)
- Day to Day usage Report Vehicle Diagnostics
- Diagnostics of various components of vehicle*
- Errors displayed on Compatible Speedometer, app and cloud
- Vehicle details like battery power, range prediction etc.
- ECU /Controller Error Details on Speedometer Device, app and dashboard*
- Full remote X-ray of the vehicle*



Antitheft Lock and Alarm

- Anti-Theft Alarm with horn on tampering vehicle
- Alarm ON/OFF from app
- Alarm sensitivity change from app
- Flashing of lights and indicators on tampering the vehicle
- App Based no key unlocking and ignition on of vehicles.

Handle & Seat Lock/Unlock

- Handle Lock / Unlock from App
- Seat Lock / Unlock from App



For more information:

India, Asian ,Americas , Australian and CIS region

Nordische Technologies Private Limited

91 Springboard,1st Floor Gopala Krishna Road 45/3 Residency Road
Bangaluru, Karnataka

Email: info@nordischetech.com

For Europe

Nordische Technologies GmbH

Hallstraße 46

25462 Rellingen (Germany)

Email: mail@nordischetech.de

For United Kingdom and British Overseas Territories

Nordische Technologies UK Limited

Ved Court , Alexandra Road LONDON,TW3 1LS

United Kingdom

Email: info@nordischetech.co.uk

