

Electric Bicycle Cargo



**NORDISCHE
TECHNOLOGIES**
Mobility Redefined

We have recognized that we need to think differently and more efficiently. Our vision is to develop and manufacture truly sustainable products that the big majority of the world's population can afford. This philosophy is based on reinventing every part of the product through multifunctional design, simplification and with a clear light-weight approach.

Our first product,, is an light electric three-wheeled high end passenger vehicle that comes in two versions; with a solar hybrid or with a battery . Nordische benefits from its low weight and high efficiency to meet the transportation and logistics needs of the 21st century.

Nordische Technologies is bringing world class vehicle Engineering technology for development of both urban and rural mobility solutions . The vehicle incorporates all the latest technology available in this category .

This is completely sensor driven next generation vehicle understanding the transportation regulation around the world .

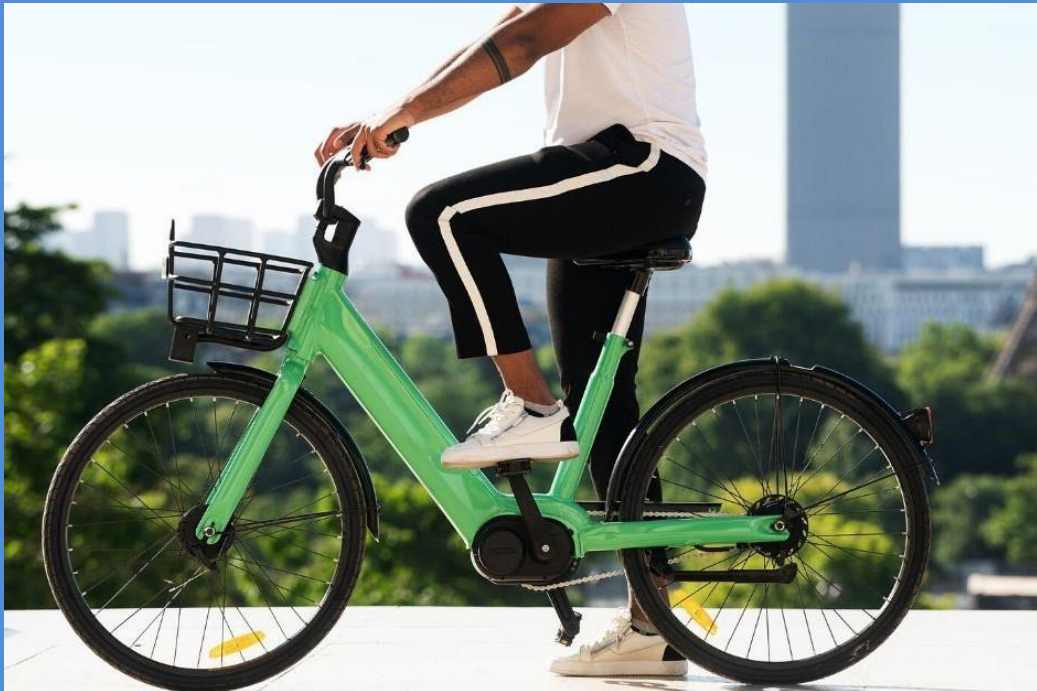
Eco-friendly and Quiet: Solar-powered vehicles have zero emission level, as they don't utilize non-renewable resources and burn fuel. The electric motors generate electricity that doesn't emit any greenhouse gases or any other pollutants. These vehicles are quieter than the vehicles powered by conventional fuels, which don't cause noise pollution as well.

Energy Availability: Solar vehicles derive their power from the sun, indirectly, that always shines and provides endless energy. The efficient solar panels can produce and store more horsepower for the vehicle.

No Fuel Costs: Unlike the conventionally fueled vehicles, solar vehicles have no fuel costs and a low cost of maintenance.

Driving Comfort: Having aluminum and lightweight components, the solar-powered vehicles run faster.

Nordische Technologies assisted product is probably first completely solar powered three wheelers available in the commercial market in this category. Its custom made 500 watt solar panel is completely driving the power train (motor) without any need of battery power. Stand alone 4x100AH batteries are available for any kind of emergency situation like night time driving or due to bad weather when enough sun energy is not available



Technical Specifications

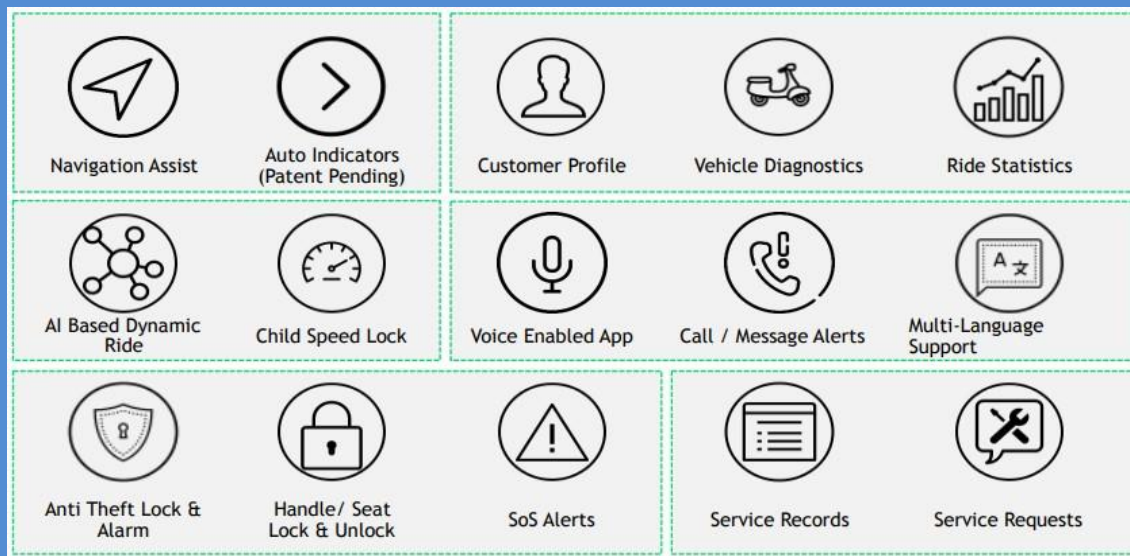
| | | |
|-----------------|-----------------------------|----------------------|
| Vehicle Dynamic | Vehicle Model | N2BCC001 |
| | Kerb Weight | 25 Kg |
| | Payload | 120 Kg |
| | Gross Vehicle Weight (GVW) | 145 Kg |
| | Tyre | 2.5 – 28 |
| | Vehicle Length | 1800 mm |
| | Vehicle Width | 560 mm |
| | Vehicle Height | 1007 mm |
| | Wheel Base | 597 mm |
| | Ground Clearance | 167 mm |
| Performance | Maximum Speed | 25 kmph |
| | Time to reach maximum speed | 10 sec |
| | Gradient | 17° |
| | Expected Range | 60 km |
| | Front Brake | Disc Brake |
| Rear Brake | Disc Brake | |
| Cargo Box | Cargo Box Length | 320 mm |
| | Cargo Box Width | 450 mm |
| | Cargo Box Height | 500 mm |
| | Maximum Cargo Weight | 50 Kg |
| | Efective Cargo Box Volume | 2.25 ft ³ |
| Electronics | Voltage System | 48V |
| | Motor Continous Power | 550 W |
| | Motor Peak Power | 1000 W |
| | Motor Continous Torque | 11 Nm |
| | Motor Peak Torque | 60 Nm |
| | Battery Type | Graphene Battery |
| Battery Pack | 4 x 12V 17Ah* | |

the following sensors are available for various measurement

- LiDAR
- Pressure
- Temperature
- Humidity
- Voltage
- Current
- Speed

Also other host of sensors for Battery and solar panel management.

ILLUSTRATIVE FEATURES OF THE VEHICLE

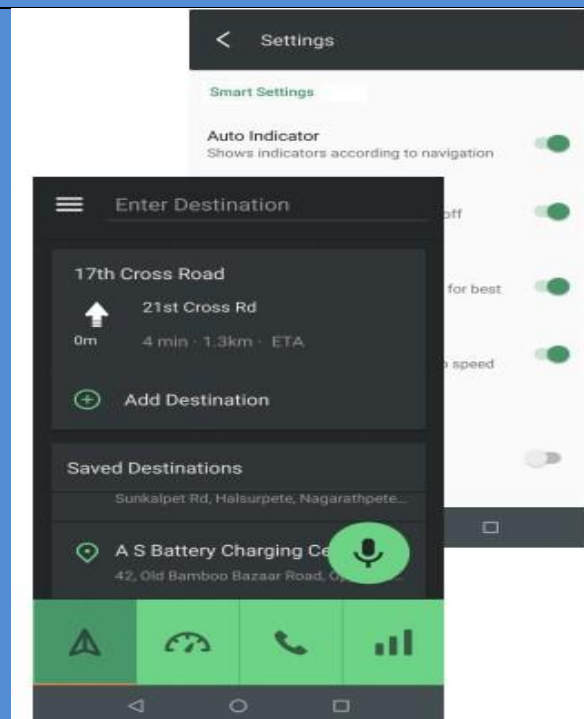


Navigation Assist

- Turn by Turn Navigation on Speedometer*
- Integrated maps (Google / MMI / Open Source Maps)
- Voice from phone
- Option for saving frequent locations
- Nearest fuel/charging station

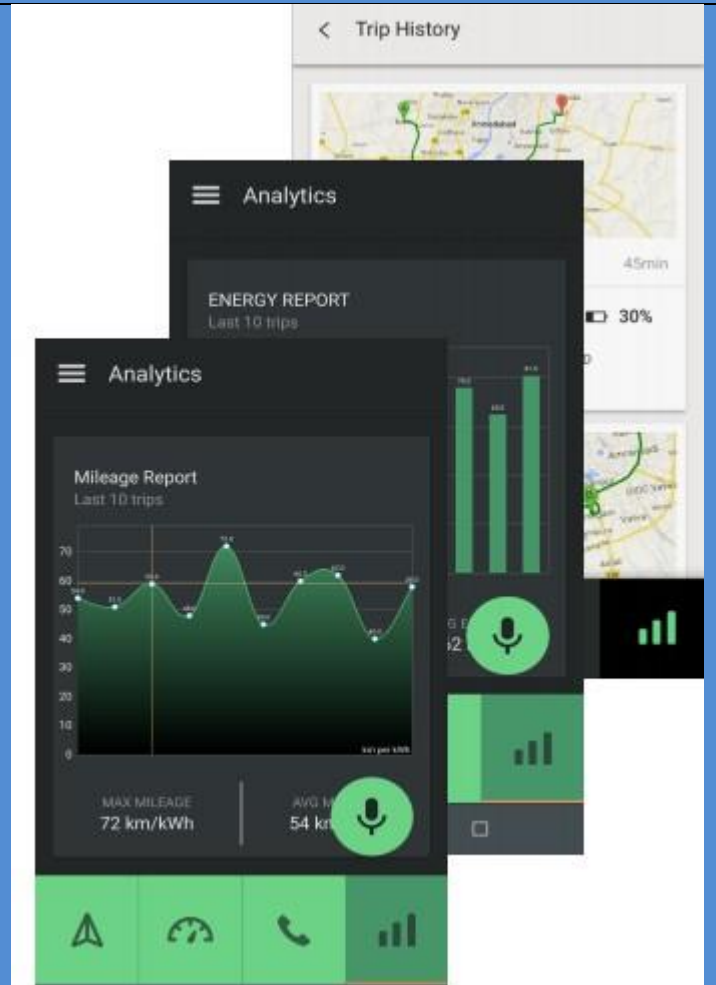
Auto Indicators

- Automatic Indicators before upcoming turn
- Switch off indicators after turn



Ride Statistics

- Mileage Report*
- Energy Report (Needs Compatible Controller)
- Day to Day usage Report Vehicle Diagnostics
- Diagnostics of various components of vehicle*
- Errors displayed on Compatible Speedometer, app and cloud
- Vehicle details like battery power, range prediction etc.
- ECU /Controller Error Details on Speedometer Device, app and dashboard*
- Full remote X-ray of the vehicle*

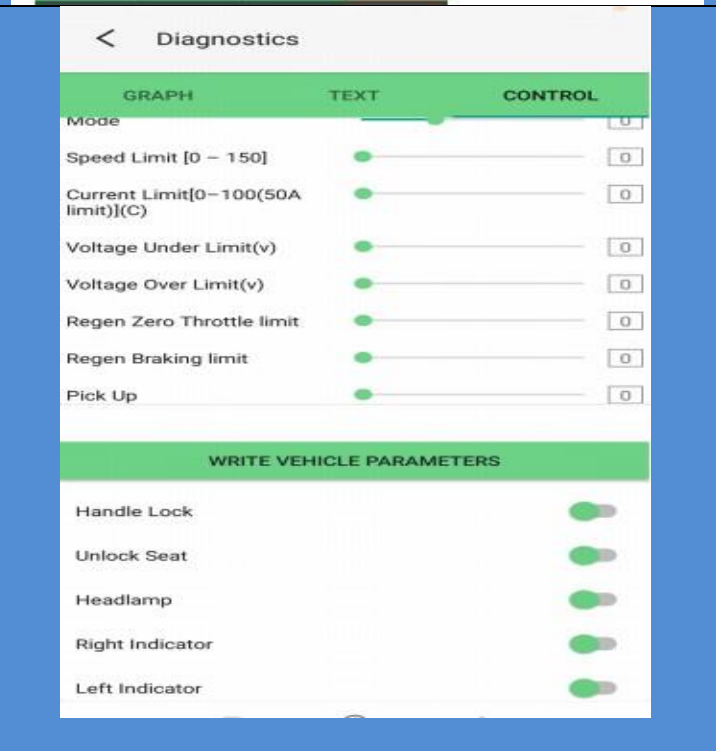


Antitheft Lock and Alarm

- Anti-Theft Alarm with horn on tampering vehicle
- Alarm ON/OFF from app
- Alarm sensitivity change from app
- Flashing of lights and indicators on tampering the vehicle
- App Based no key unlocking and ignition on of vehicles.

Handle & Seat Lock/Unlock

- Handle Lock / Unlock from App
- Seat Lock / Unlock from App





For more information : contact

**India, Asian ,Americas , Australian and CIS region
Nordische Technologies Private Limited
91 Springboard,1st Floor
Gopala Krishna Road
45/3 Residency Road
Bangaluru, Karnataka
info@nordischetech.com**

**Nordische Technologies GmbH
Hallstraße 46
25462 Rellingen (Germany)
mail@nordischetech.de**

**For United Kingdom and British Overseas Territories
Nordische Technologies UK Limited
Ved Court , Alexandra Road
LONDON,TW3 1LS
United Kingdom
info@nordischetech.co.uk**